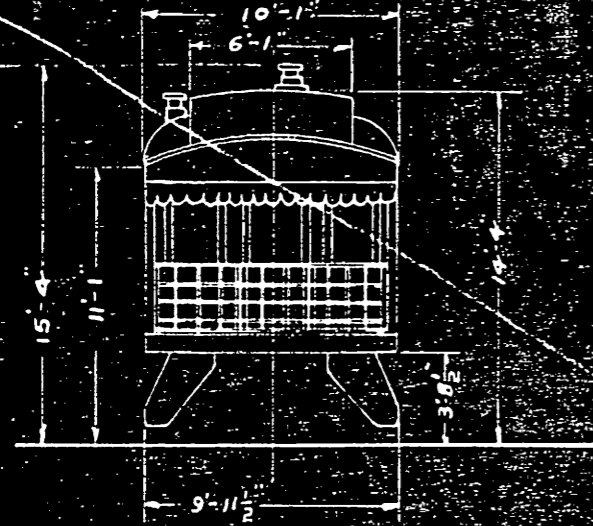


RENUMBERING	
YEAR	No.
1913	G.T.P. 3410
1916	C.G.R. 41
1919	C.NAT. 55
1924	C.NAT. 89

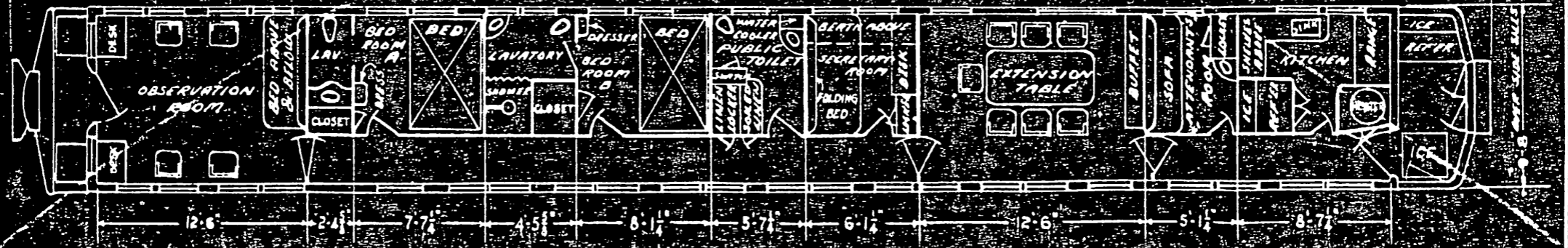
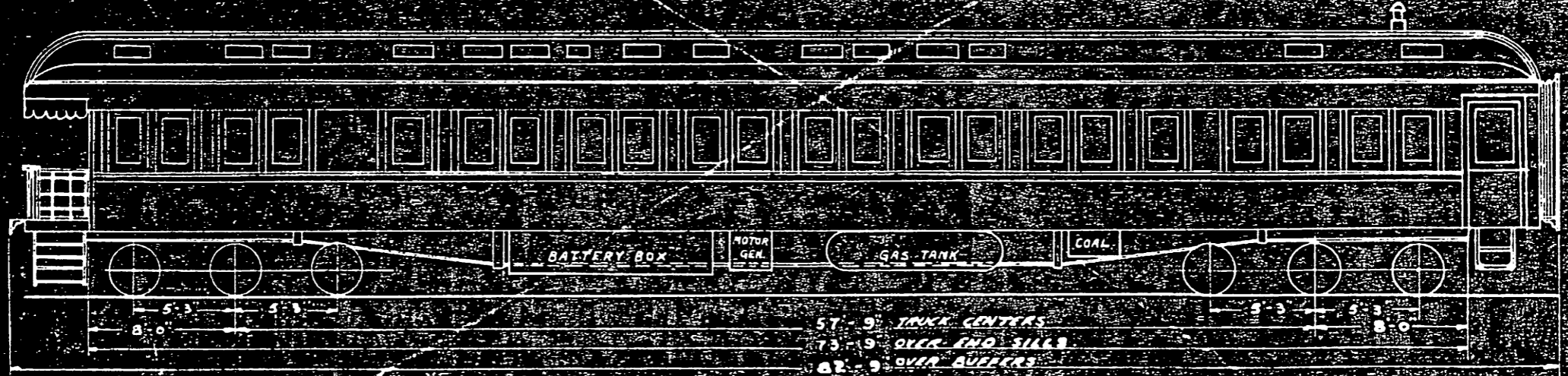
SEE FLOOR PLAN DWG. NO. 6A-8117-B



CANADIAN NATIONAL RAILWAYS
MECHANICAL DEPARTMENT
 MONCTON, N. B.

73'-9" BUSINESS CAR	
CLASS PV-74-E	
NO OF CARS	CAR NO
1	89

Handwritten: SUPPLEMENTAL
 05/11/24



ISSUE: - A.B.C.