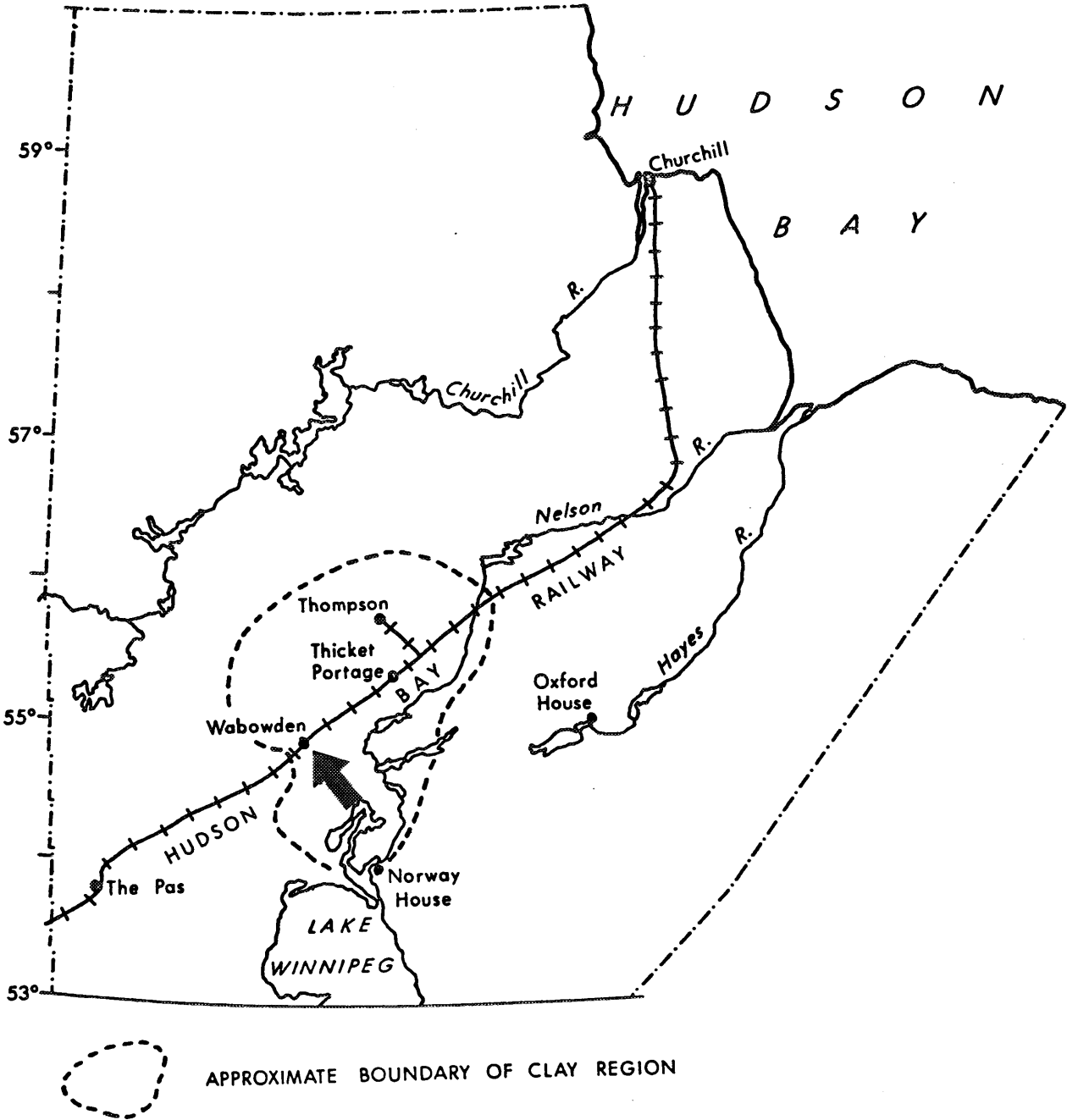


VIA RAIL/CANADIAN NATIONAL RAILWAYS STATION, WABOWDEN, MANITOBA



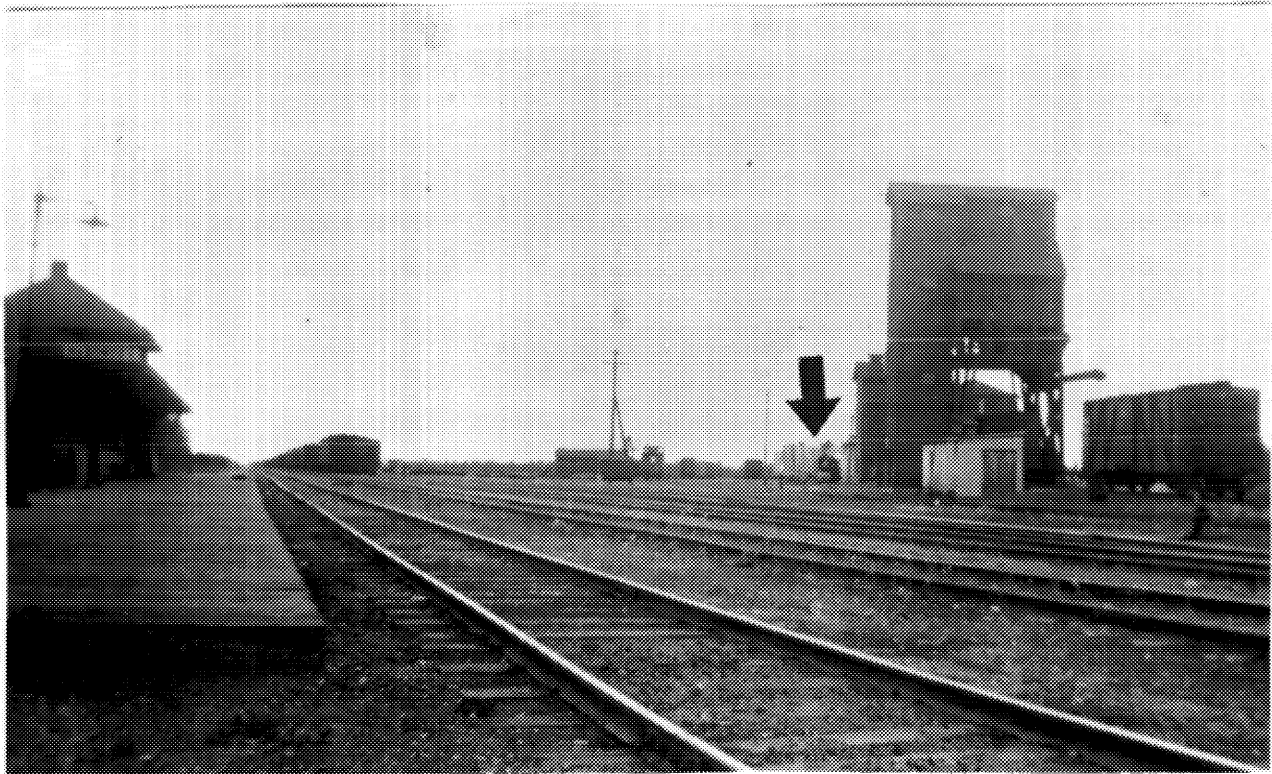
- 1 VIA Rail/CNR station, Wabowden, Manitoba; built in 1930, designed by the Engineering Department of the CNR; track side elevation. (Murray Peterson, 1992.)

VIA RAIL/CANADIAN NATIONAL RAILWAYS STATION, WABOWDEN, MANITOBA



2 Map of northern Manitoba, arrow indicating Wabowden. (Reproduced from H.I. Redekopp, "An Analysis of the Social and Economic Problems of Four Small Communities in Northern Manitoba: Wabowden, Thicket Portage, Norway House and Oxford House," unpublished M.A. Thesis, University of Manitoba, Winnipeg, 1968, p. 15.)

VIA RAIL/CANADIAN NATIONAL RAILWAYS STATION, WABOWDEN, MANITOBA

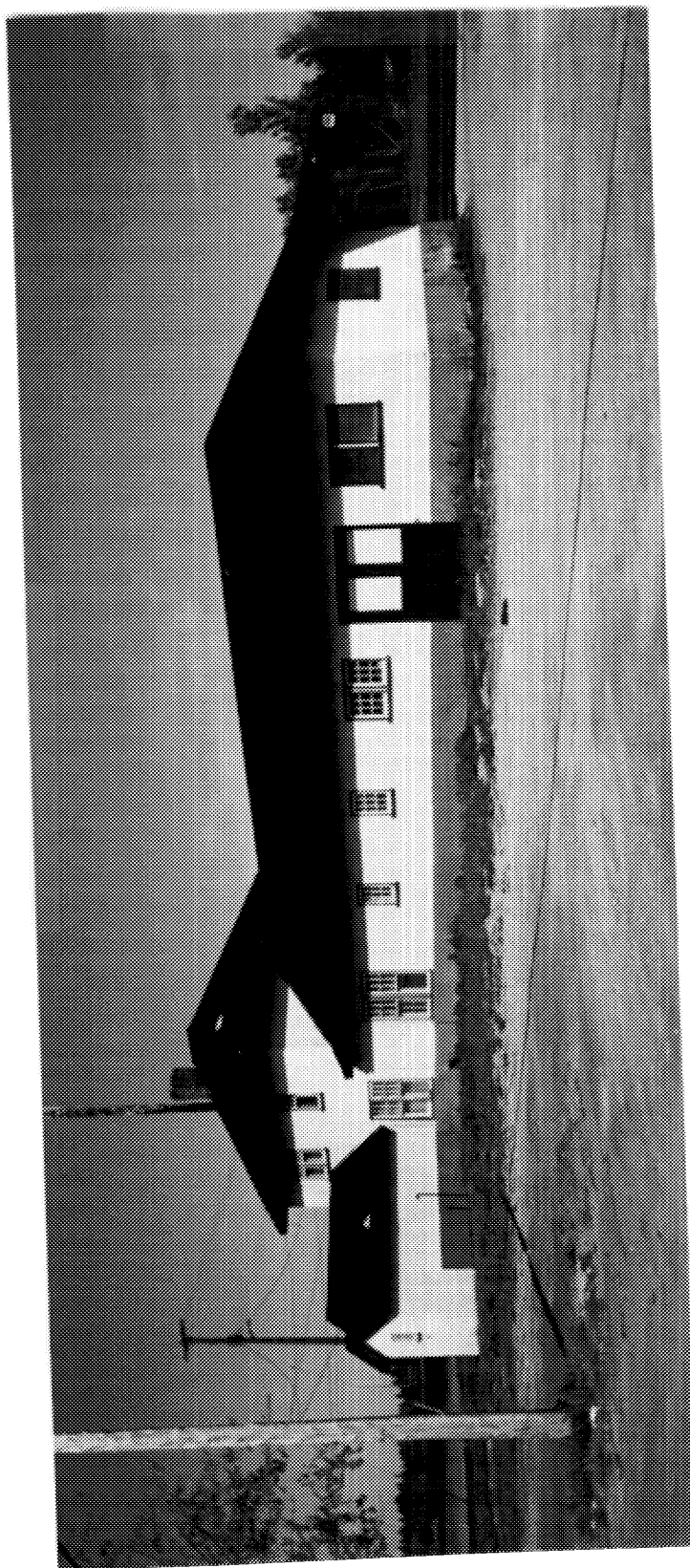


- 3 Wabowden, Manitoba, railway complex, n.d. Buildings include the station at the extreme left, coal chute, water tower and round house (indicated by the arrow). (Photograph courtesy of Bert Schroeder, long time resident of Wabowden.)



4 VIA Rail/CNR station, Wabowden, Manitoba, track side elevation. (Murray Peterson, 1992.)

VIA RAIL/CANADIAN NATIONAL RAILWAYS STATION, WABOWDEN, MANITOBA



5 VIA Rail/CNR station, Wabowden, Manitoba, town side elevation. (Murray Peterson, 1992.)

VIA RAIL/CANADIAN NATIONAL RAILWAYS STATION, WABOWDEN, MANITOBA



6 VIA Rail/CNR station, Wabowden, Manitoba, freight or north end. (Murray Peterson, 1992.)



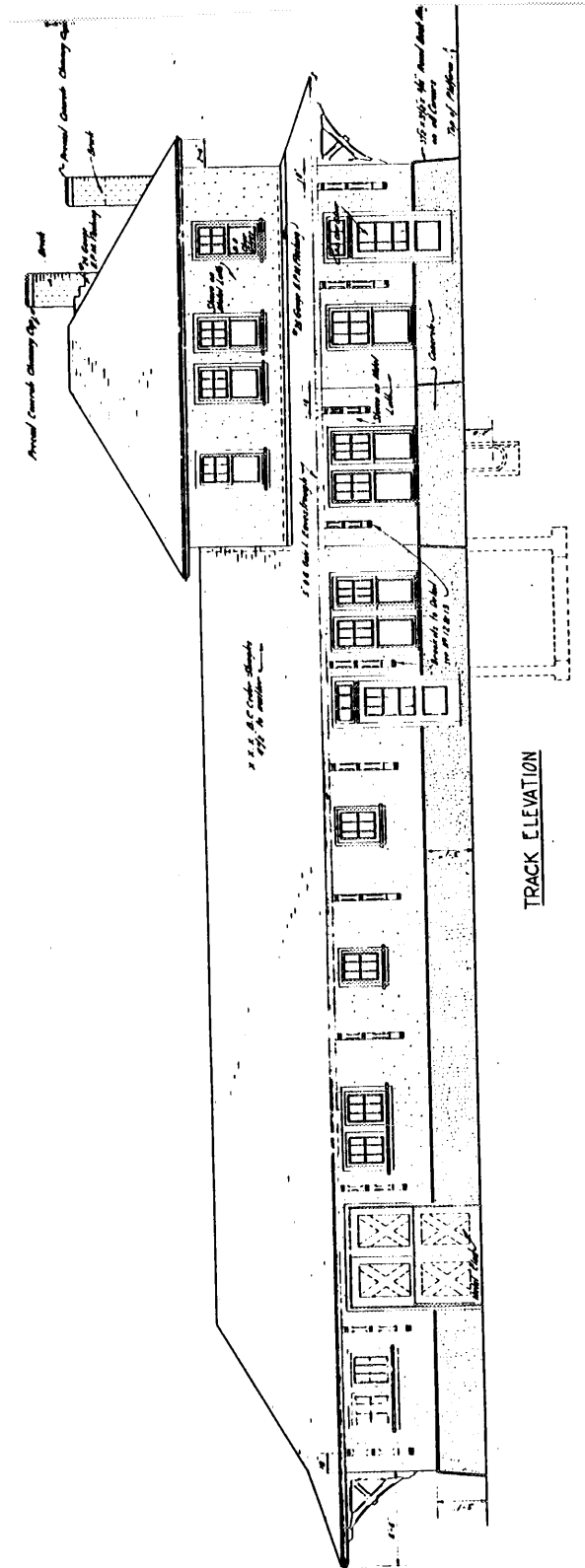
7 VIA Rail/CNR station, Wabowden, Manitoba, south end. (Murray Peterson, 1992.)

VIA RAIL/CANADIAN NATIONAL RAILWAYS STATION, WABOWDEN, MANITOBA



8 Wabowden, Manitoba, September 1931. The Canadian Chamber of Commerce toured the completed line to Churchill, stopping in Wabowden. (Photo courtesy of the Western Canada Pictorial Index, negative 1438-43571.)

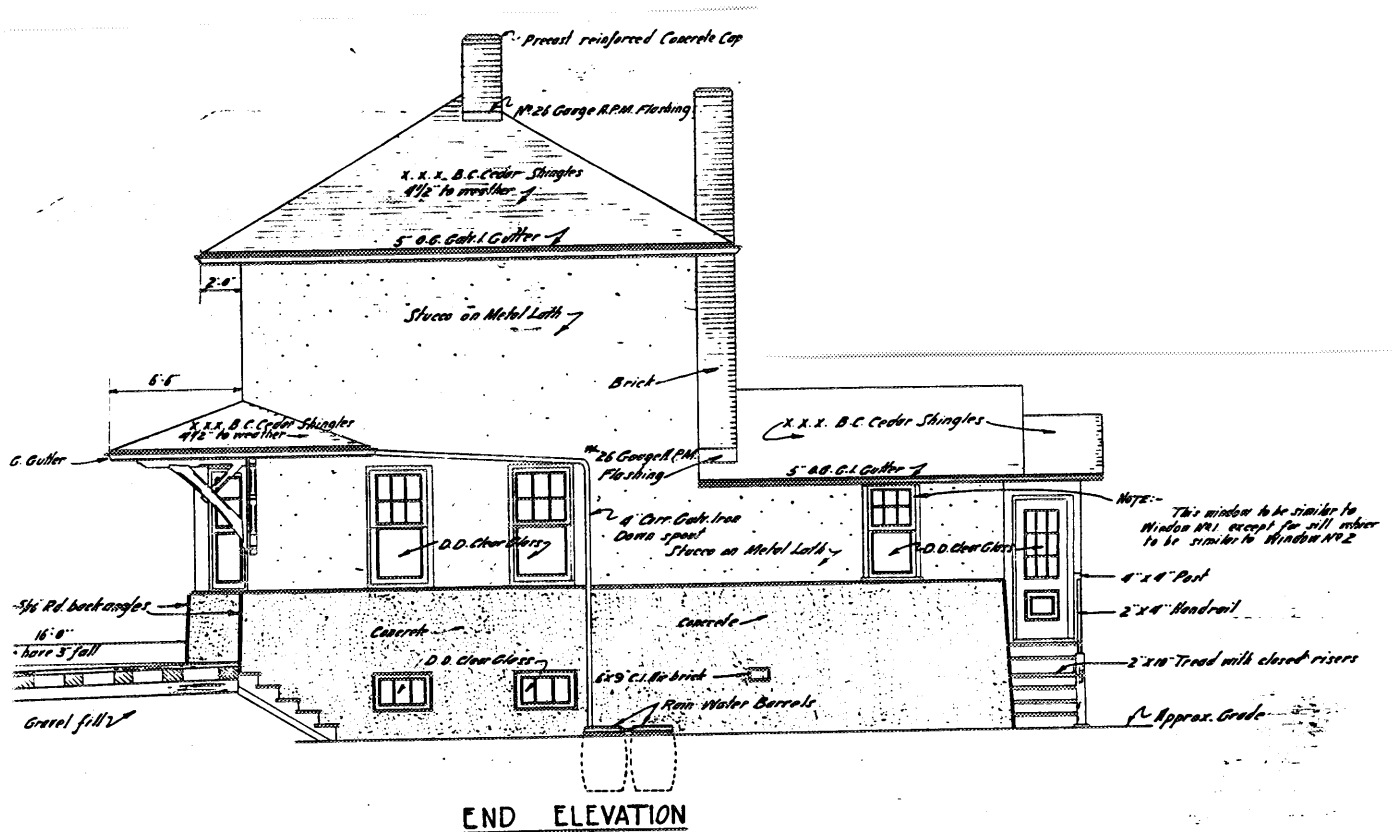
VIA RAIL/CANADIAN NATIONAL RAILWAYS STATION, WABOWDEN, MANITOBA



9 CNR station plan #100-251, for stations at Wabowden and Cranberry Portage, "Track Elevation." (Drawing courtesy of CNR, Manitoba West Division, Winnipeg.)



VIA RAIL/CANADIAN NATIONAL RAILWAYS STATION, WABOWDEN, MANITOBA



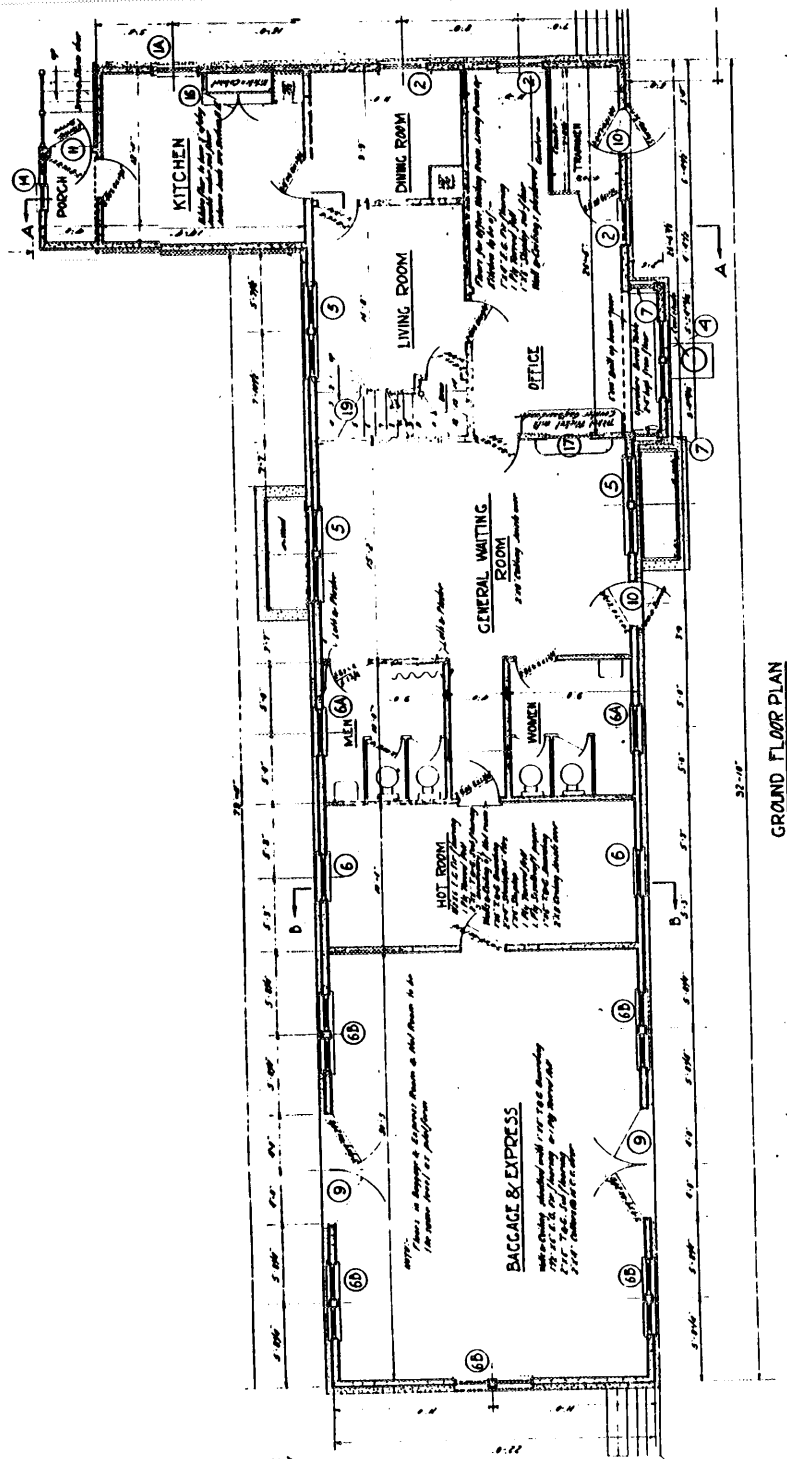
11 CNR station plan #100-251, for stations at Wabowden and Cranberry Portage, "End Elevation." (Drawing courtesy of CNR, Manitoba West Division, Winnipeg.)

VIA RAIL/CANADIAN NATIONAL RAILWAYS STATION, WABOWDEN, MANITOBA



- 12 VIA Rail/CNR station, Cranberry Portage, Manitoba; constructed 1929, designed by the engineering department of the CNR; track elevation. (Murray Peterson, 1991.)

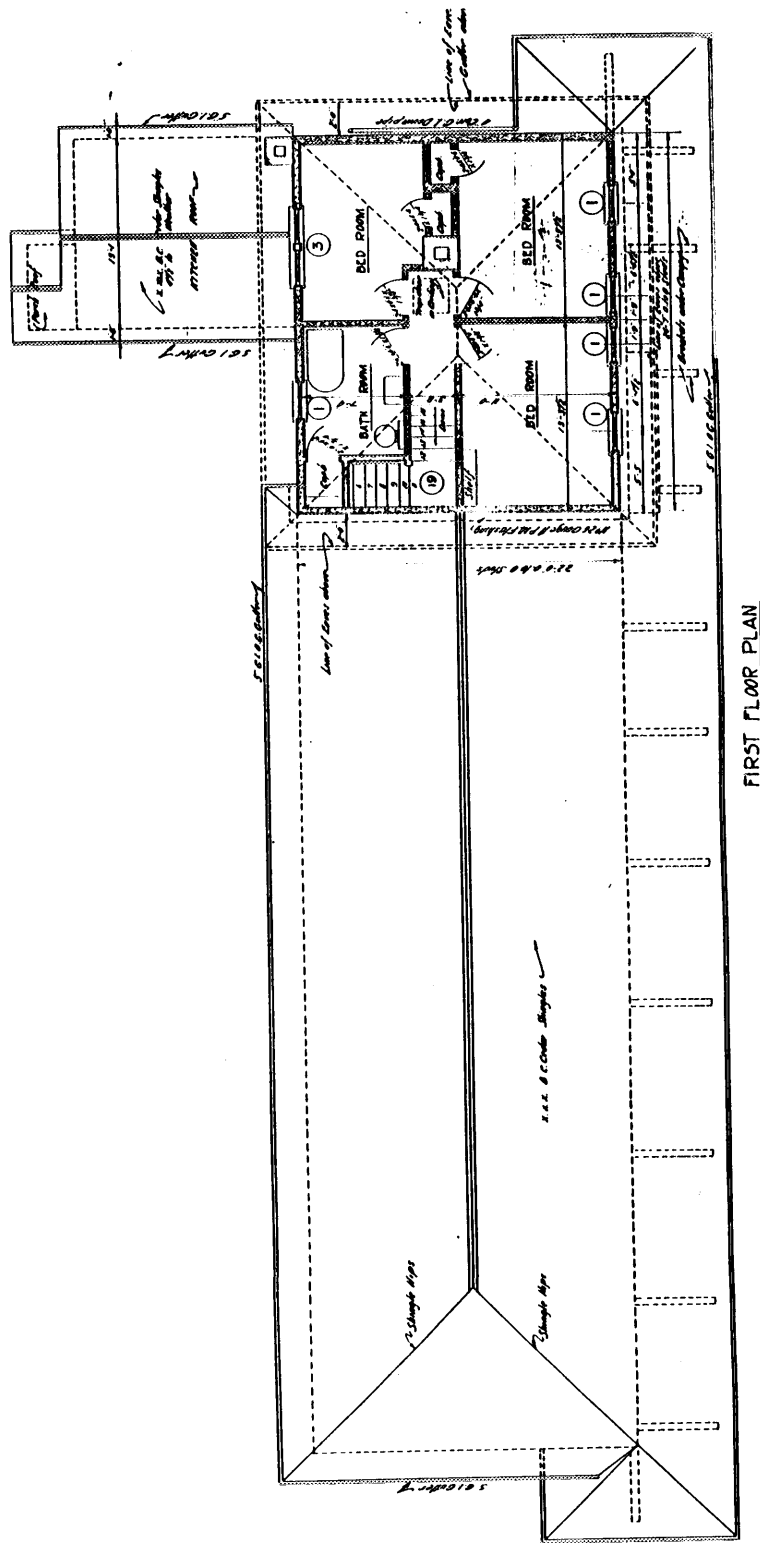
VIA RAIL/CANADIAN NATIONAL RAILWAYS STATION, WABOWDEN, MANITOBA



GROUND FLOOR PLAN

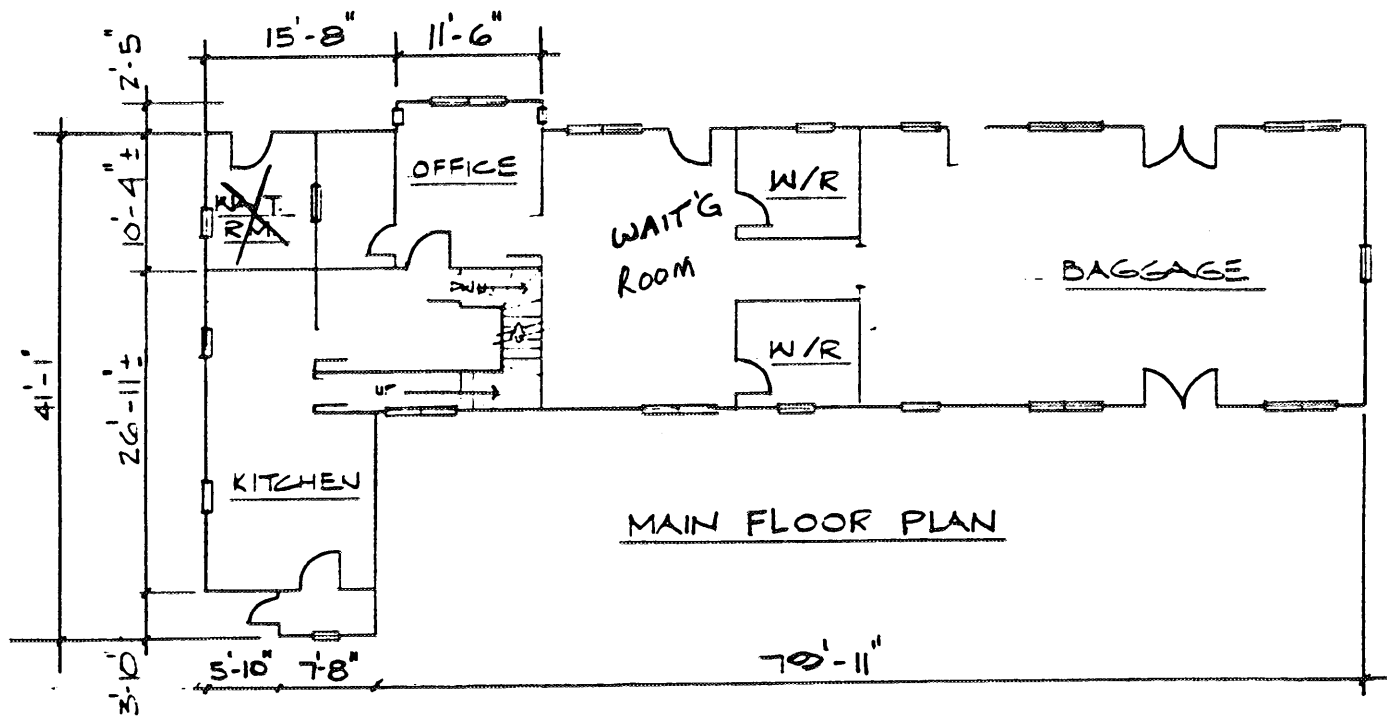
13 CNR station plan #100-251, for stations at Wabowden and Cranberry Portage, "Ground Floor Plan." (Drawing courtesy of CNR, Manitoba West Division, Winnipeg.)

VIA RAIL/CANADIAN NATIONAL RAILWAYS STATION, WABOWDEN, MANITOBA

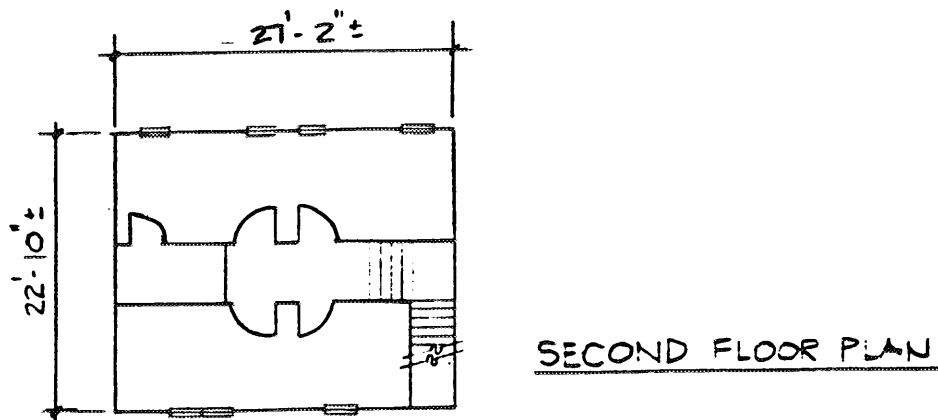


14 CNR station plan #100-251, for stations at Wabowden and Cranberry Portage, "First Floor Plan." (Drawing courtesy of CNR, Manitoba West Division, Winnipeg.)

VIA RAIL/CANADIAN NATIONAL RAILWAYS STATION, WABOWDEN, MANITOBA



15 VIA Rail/CNR station, Wabowden, Manitoba, 1986, "Main Floor Plan." (Plans courtesy of M. Woelcke, VIA Rail, Winnipeg.)

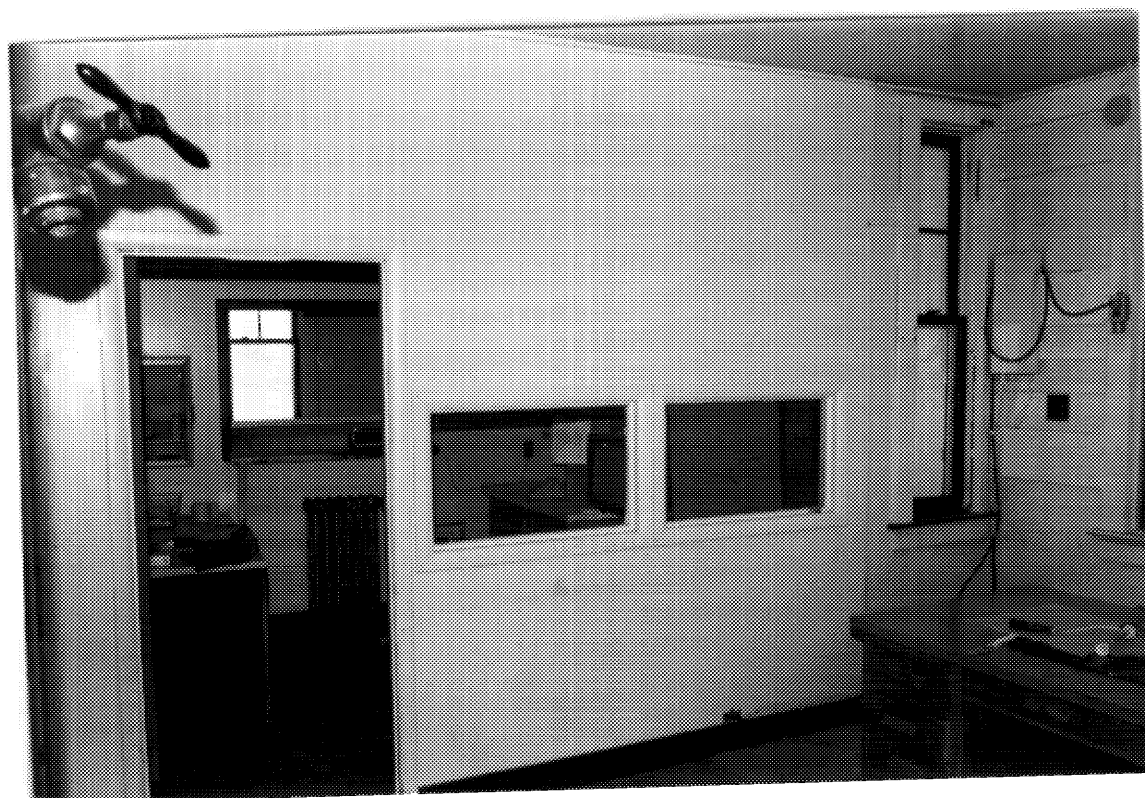


16 VIA Rail/CNR station, Wabowden, Manitoba, 1986, "Second Floor Plan." (Plans courtesy of M. Woelcke, VIA Rail, Winnipeg.)

VIA RAIL/CANADIAN NATIONAL RAILWAYS STATION, WABOWDEN, MANITOBA

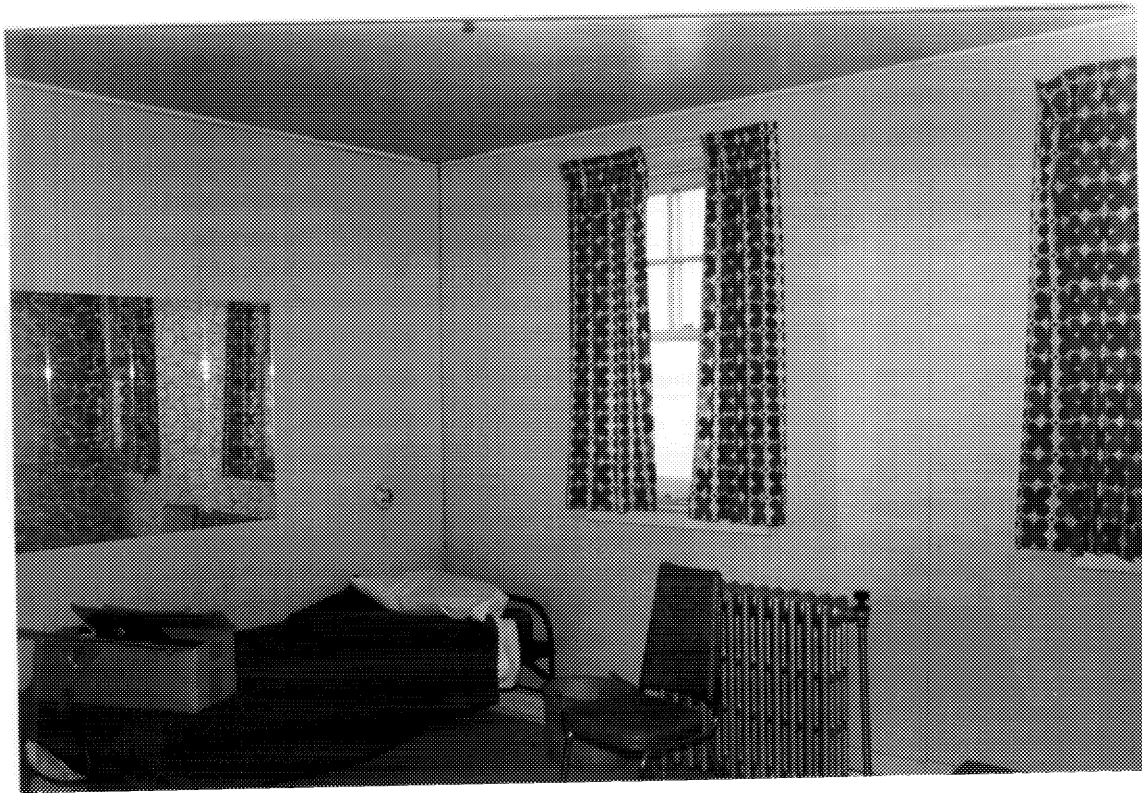


17 VIA Rail/CNR station, Wabowden, Manitoba, waiting room and boarded up ticket counter. (Murray Peterson, 1992.)



18 VIA Rail/CNR station, Wabowden, Manitoba, converted living room. (Murray Peterson, 1992.)

VIA RAIL/CANADIAN NATIONAL RAILWAYS STATION, WABOWDEN, MANITOBA



19 VIA Rail/CNR station, Wabowden, Manitoba, second floor residential space. (Murray Peterson, 1992.)

VIA RAIL/CANADIAN NATIONAL RAILWAYS STATION, WABOWDEN, MANITOBA

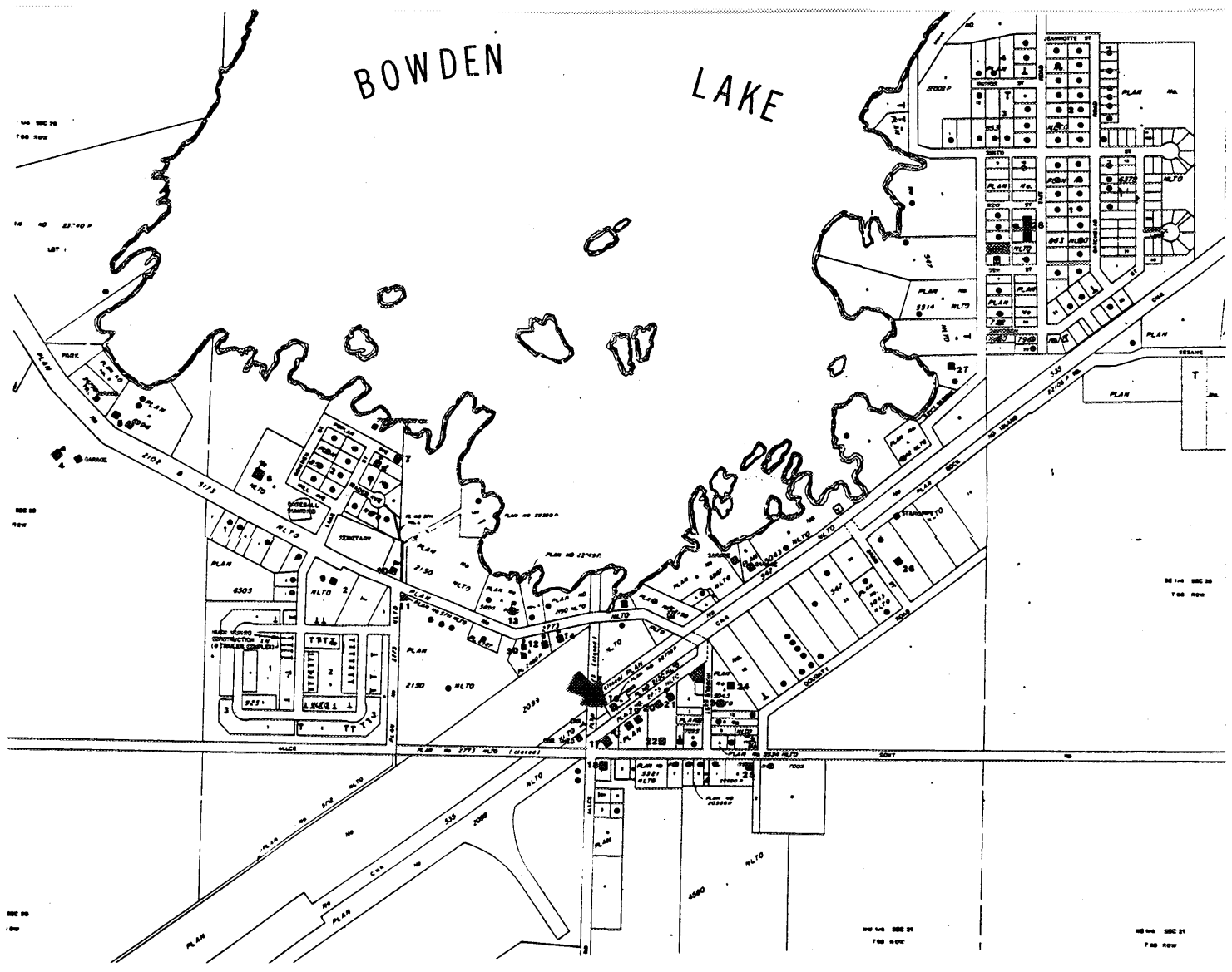


20 Wabowden, Manitoba, showing CNR station and development to the east, n.d. (Photo courtesy of Bert Schroeder, Wabowden.)



21 Wabowden, Manitoba, showing development west of the station (arrow indicating station), n.d. (Photo courtesy of Bert Schroeder, Wabowden.)

VIA RAIL/CANADIAN NATIONAL RAILWAYS STATION, WABOWDEN, MANITOBA



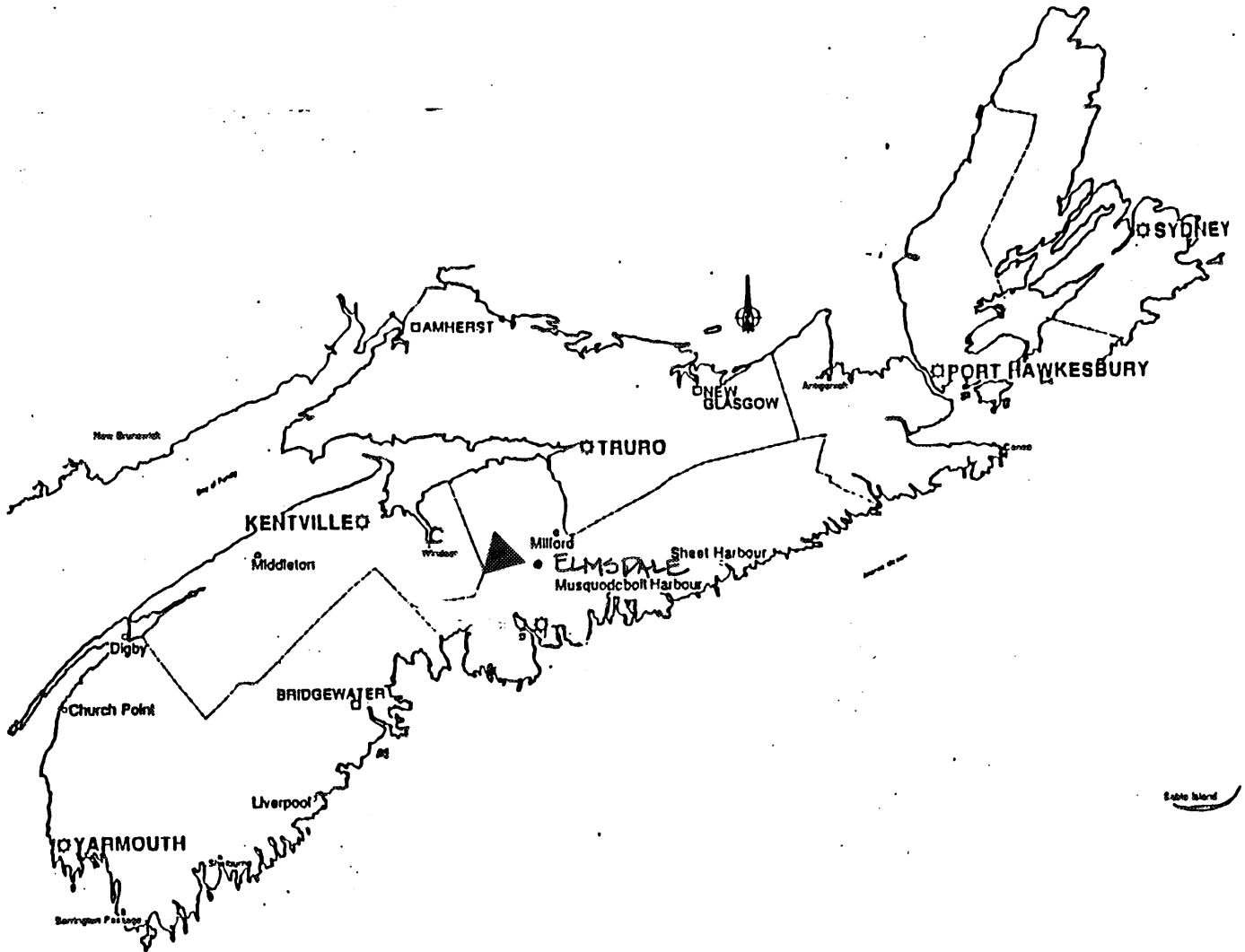
22 Plan of Wabowden, Manitoba, 1992. Dots indicate single family homes, a 'T' indicates a mobile home and the arrow marks the train station. (Map courtesy of Manitoba Department of Municipal Planning, Thompson.)

FORMER CANADIAN NATIONAL RAILWAYS STATION, ELMSDALE, NS



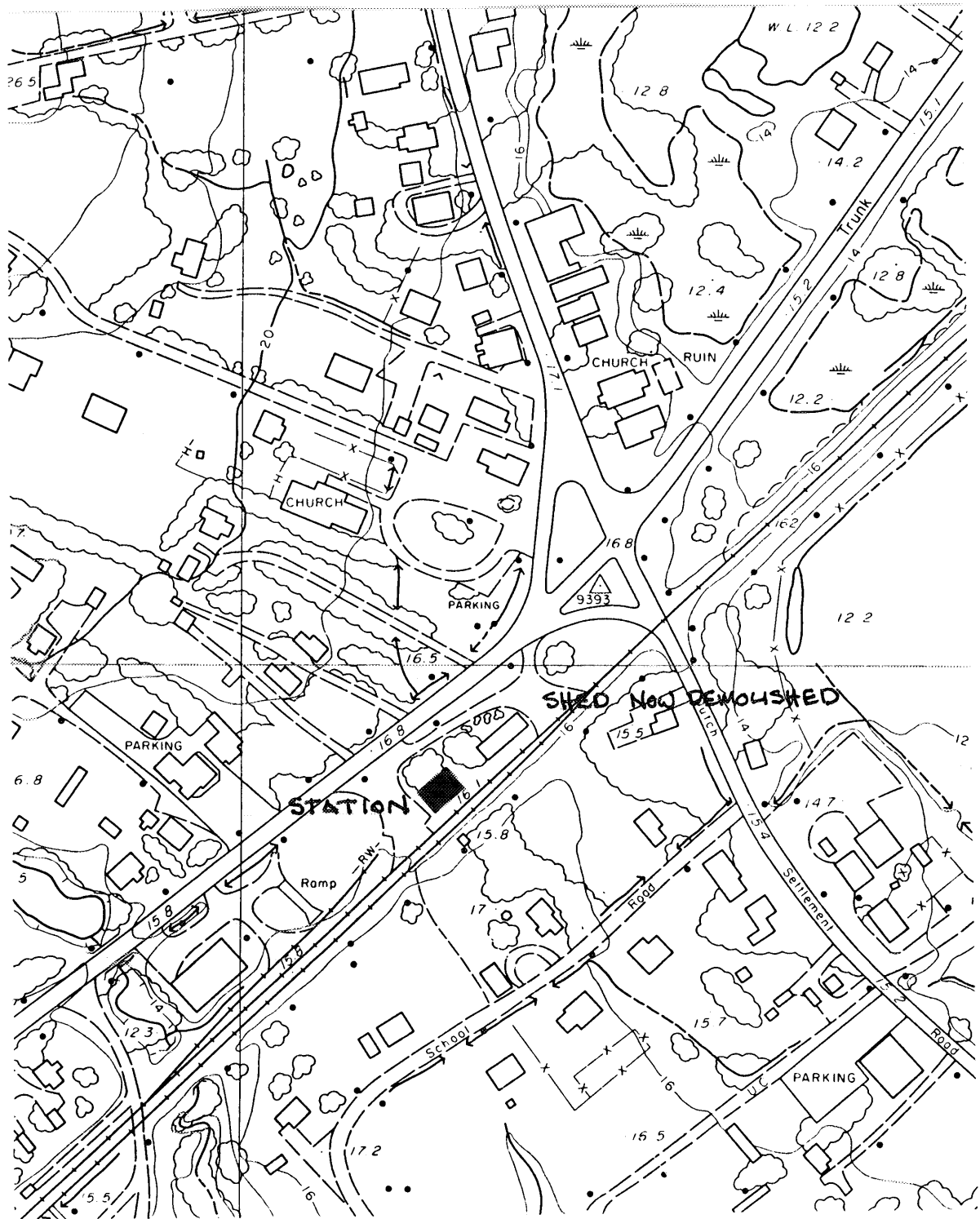
- 1 Former Canadian National Railways (hereafter, CNR) station, Elmsdale, Nova Scotia; built circa 1925, designer unknown. (Harry Jost, Delta Four Associates Inc. - hereafter DFA - 1992.)

FORMER CANADIAN NATIONAL RAILWAYS STATION, ELMSDALE, NS



2 Contemporary map of Nova Scotia showing location of Elmsdale. (Complete atlas of Canada and the world. George Philip and Son Ltd, n.d.)

**FORMER CANADIAN NATIONAL RAILWAYS STATION, ELMSDALE, NS**

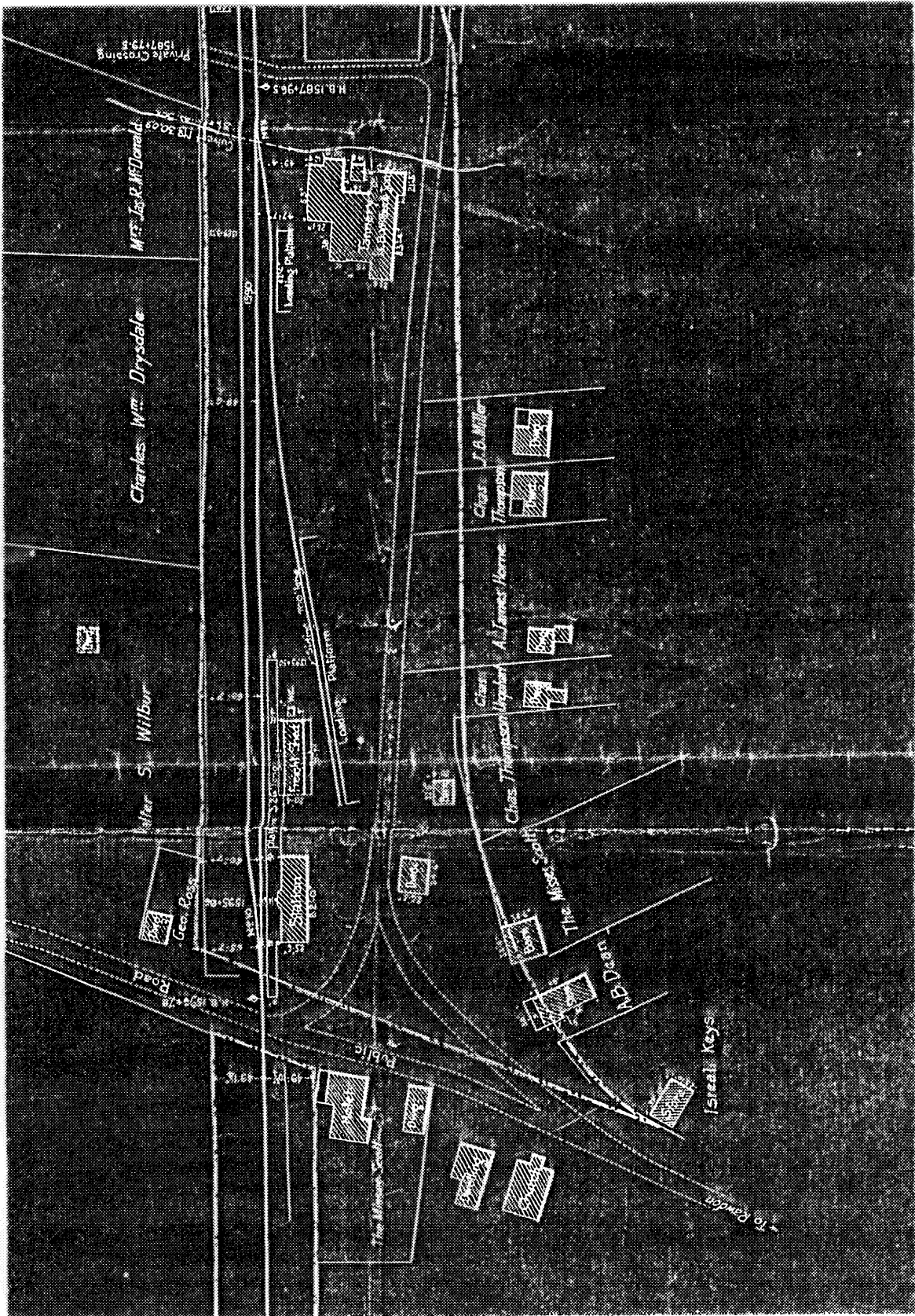


3 Map showing location of CNR station, Elmsdale, Nova Scotia.  
(Map courtesy of Nova Scotia Department of Natural Resources, n.d.)

FORMER CANADIAN NATIONAL RAILWAYS STATION, ELMSDALE, NS

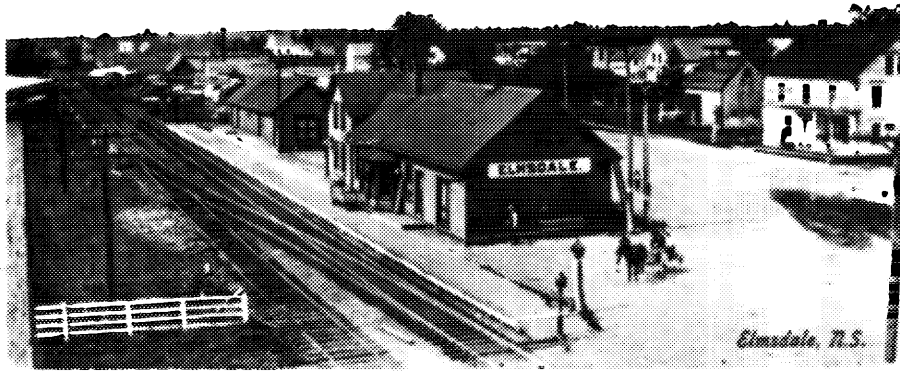


- 4 Hotel and other structures adjacent to original Elmsdale station, 1920s. (Photo courtesy of Public Archives of Nova Scotia - hereafter - PANS.)



5 Ground plan of CNR yard, Elmsdale, Nova Scotia, showing adjacent businesses. Prepared by Division Engineers Office, W. A. Cowan, Moncton, 23 September, 1919. (Map courtesy of PANS - call # RG28, "S", VOL 162, #17.)

FORMER CANADIAN NATIONAL RAILWAYS STATION, ELMSDALE, NS



6 First CNR station, Elmsdale, demolished 1925, photo circa 1920s. (Photo courtesy of PANS.)



7 CNR station, track side elevation showing station prior to 1986 renovations. (Photo courtesy of Jay Underwood, Elmsdale.)

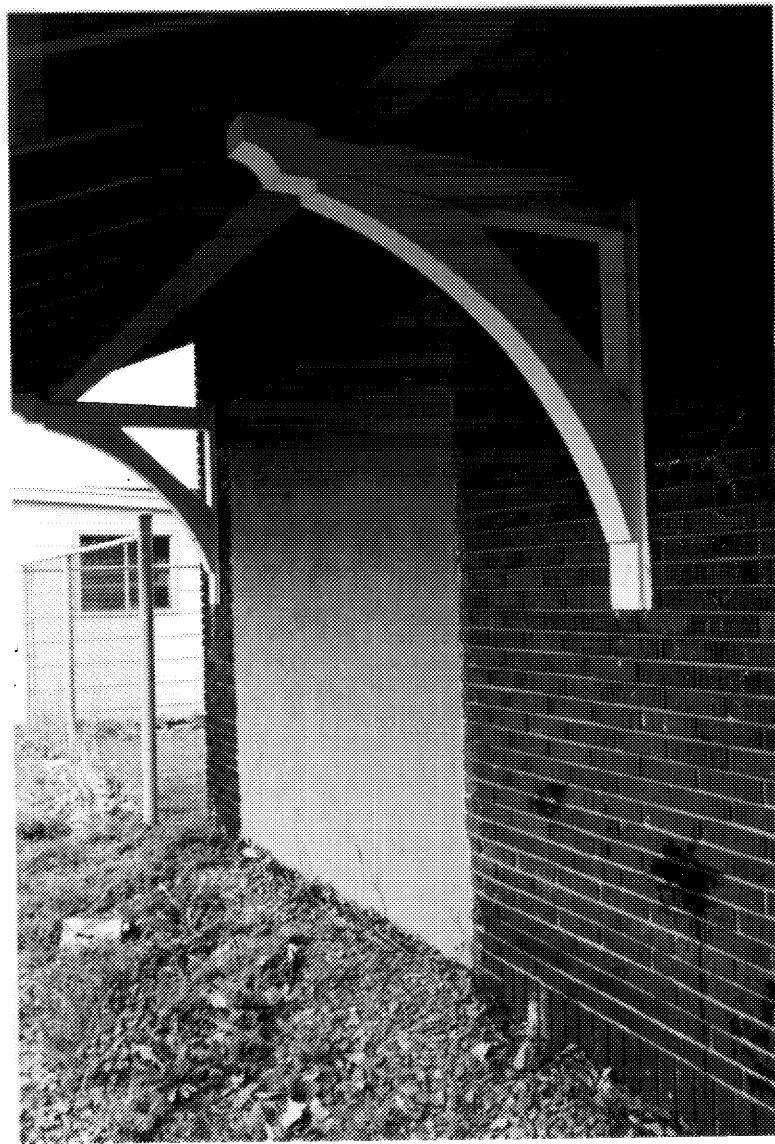
FORMER CANADIAN NATIONAL RAILWAYS STATION, ELMSDALE, NS



8 CNR station, street side elevation showing station prior to 1986 renovations. (Photo courtesy of Jay Underwood, Elmsdale.)



9 CNR station, track side elevation showing new 1986 windows.  
(Harry Jost, DFA, 1992.)



10 CNR station, track side elevation showing brackets. (Harry Jost, DFA, 1992.)



11 CNR station, end elevation. (Harry Jost, DFA, 1992.)



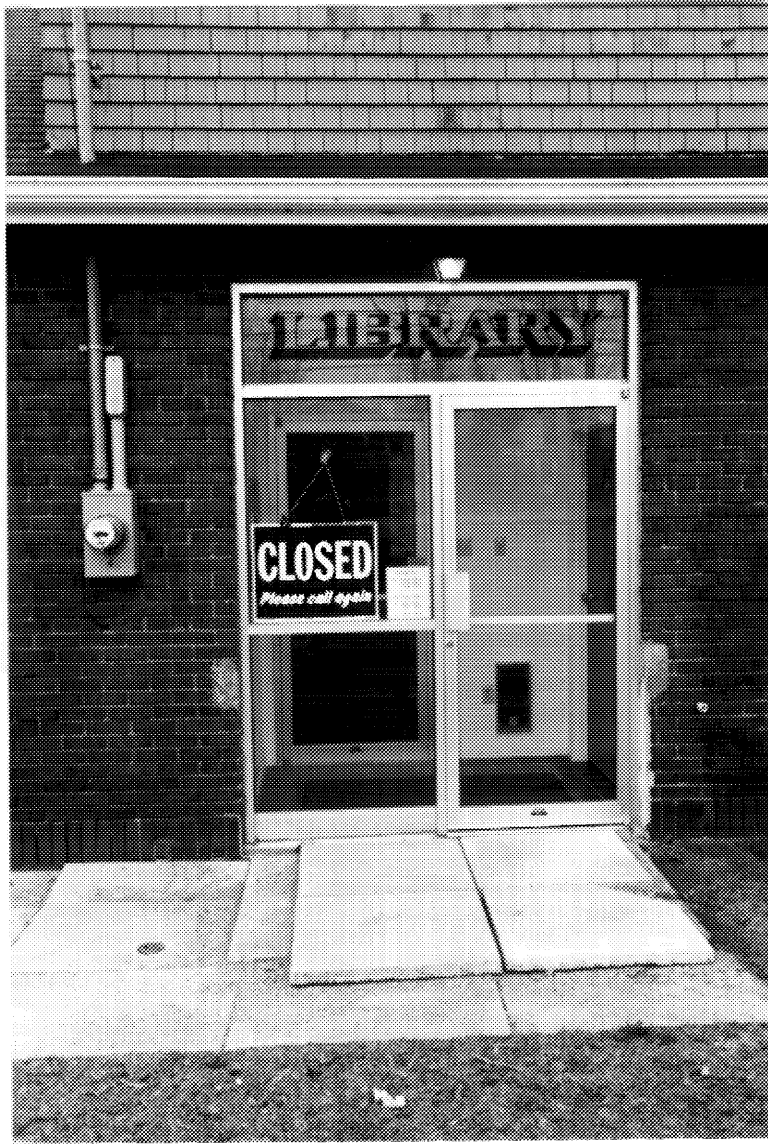
12 CNR station, end elevation. (Harry Jost, DFA, 1992.)

FORMER CANADIAN NATIONAL RAILWAYS STATION, ELMSDALE, NS

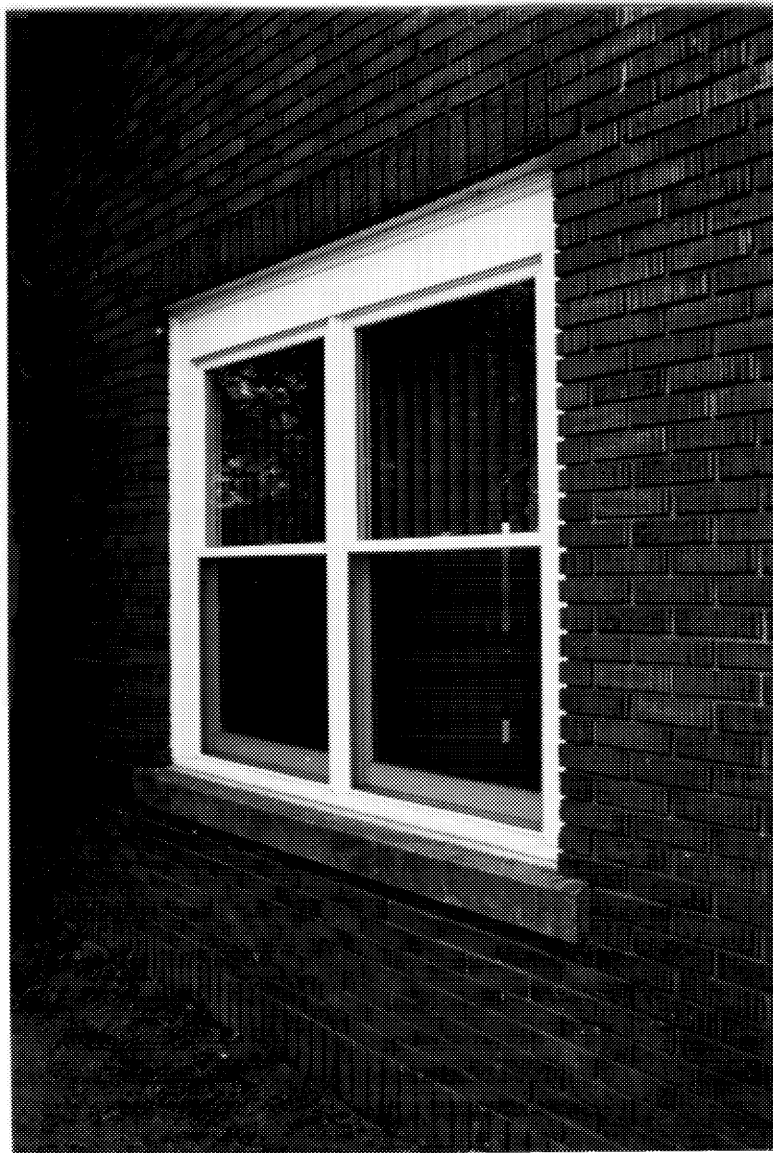


13 CNR station, street side elevation. (Harry Jost, DFA, 1992.)

FORMER CANADIAN NATIONAL RAILWAYS STATION, ELMSDALE, NS



14 CNR station, street side elevation showing new doors. (Harry Jost, DFA, 1992.)



15 CNR station, end elevation showing brick texture. (Harry Jost, DFA, 1992.)

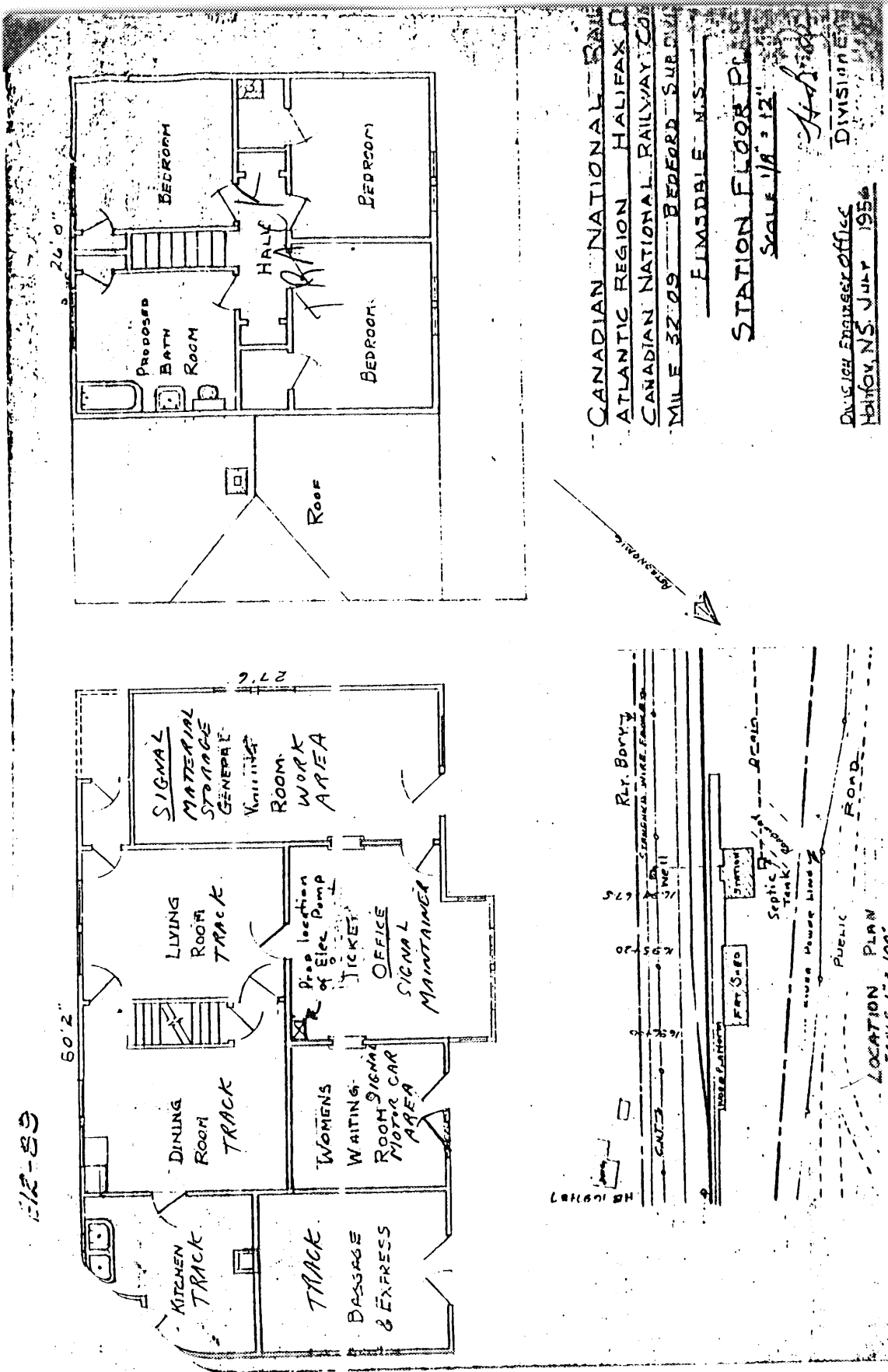


16 CNR station, Stewiacke, Nova Scotia, built 1926. (Barry Moody, DFA, 1991.)

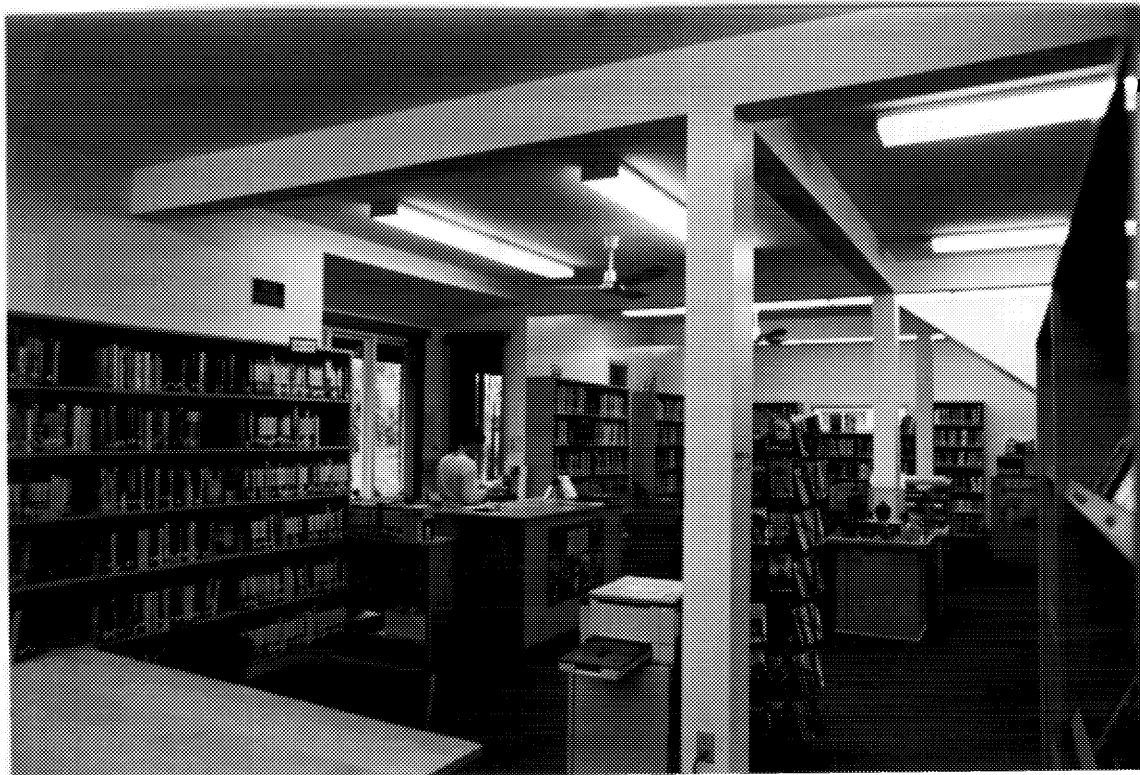


17 CPR station, Bridgetown, Nova Scotia, built 1919. (Barry Moody, DFA, 1991.)

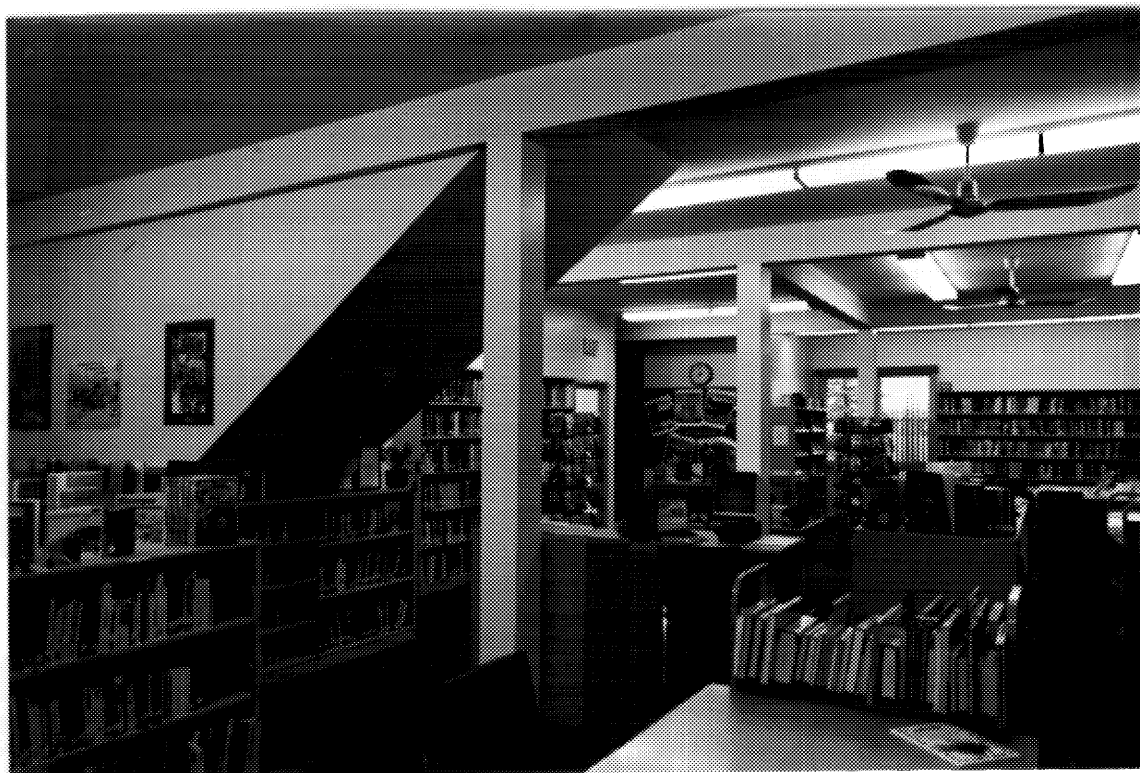
FORMER CANADIAN NATIONAL RAILWAYS STATION, ELMSDALE, NS



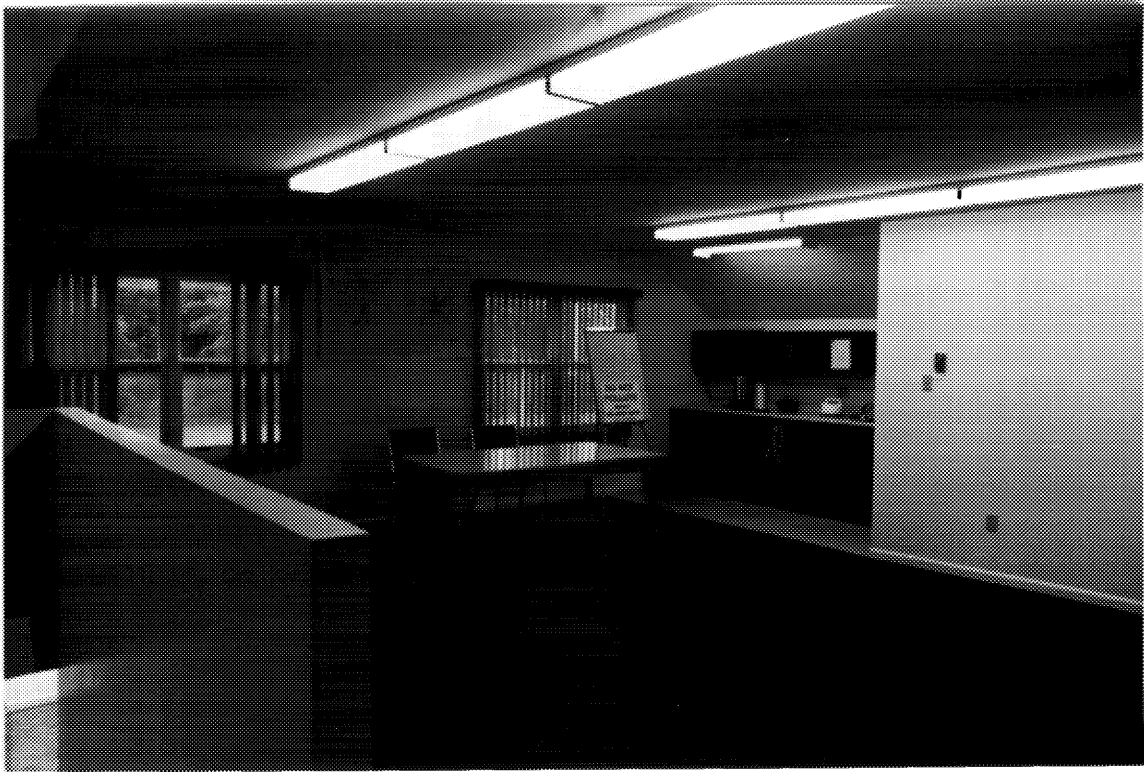
18 CNR station, plan prepared by Division Engineer Office, Halifax, Nova Scotia, July 1956. (Plan courtesy of CNR Regional Office, Moncton, New Brunswick.)



19 CNR station, interior showing new finishes - 1986 renovations. (Harry Jost, DFA, 1992.)



20 CNR station, interior. (Harry Jost, DFA, 1992.)



21 CNR station, interior showing renovated second floor. (Harry Jost, DFA, 1992.)



22 CNR station, showing adjacent houses. (Harry Jost, DFA, 1992.)



23 CNR station, showing adjacent houses. (Harry Jost, DFA, 1992.)

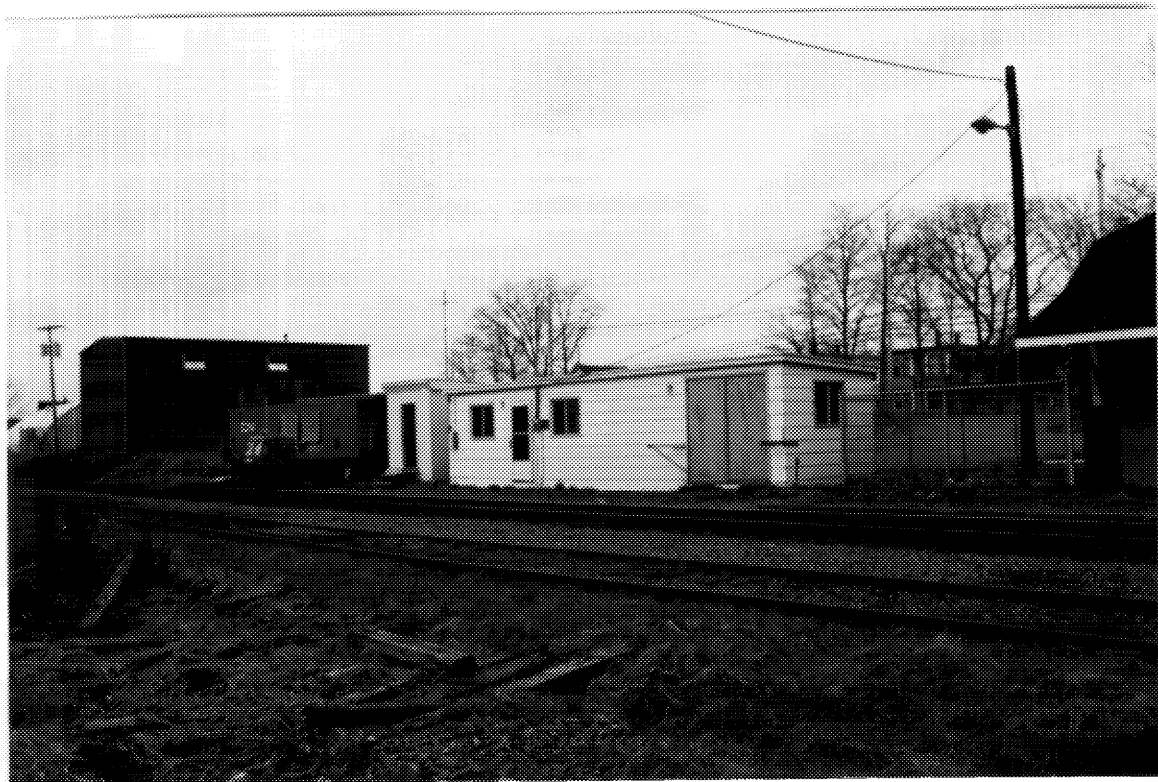


24 CNR station, showing adjacent houses, street side. (Harry Jost, DFA, 1992.)

FORMER CANADIAN NATIONAL RAILWAYS STATION, ELMSDALE, NS



25 CNR station, showing chain-link fence. (Harry Jost, DFA, 1992.)



26 CNR station, showing adjacent CNR buildings. (Harry Jost, DFA, 1992.)

FORMER CANADIAN NATIONAL RAILWAYS STATION, ELMSDALE, NS



27 CNR station, showing station from adjacent highway. (Harry Jost, DFA, 1992.)



28 CNR station, showing station from adjacent highway. (Harry Jost, DFA, 1992.)